

**KAM® KF**  
Karl Fischer Moisture Analyzer

Per API MPMS 10.9, ISO 12937,  
ASTM D4928, and EI 386

Designed for portable and lab use in petroleum applications, the KAM® KF continues a tradition of rugged design and advanced features.

**KEY FEATURES**

- Data storage for up to 100 samples
- USB port
- Fully portable up to 24-hour battery life
- Reagent life and expiration notification
- Consumables storage
- Bluetooth®
- Windows based software
- Spanish / English menu options

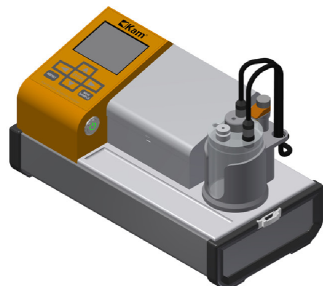
The KAM® KF Karl Fischer Moisture Analyzer rapidly and accurately determines the water content of liquid hydrocarbon samples for all custody transfer operations: production, pipeline, marine, or truck. It can also be used to analyze water content in refined products, transformer oils, jet fuels, chemicals, and most other liquids.

Easy to use and fully automatic, KAM® KF Karl Fischer Moisture Analyzers operate with greater accuracy and speed than other water determination methods, generally taking less than five minutes to run a single sample with an accuracy up to ten times higher than centrifuge.

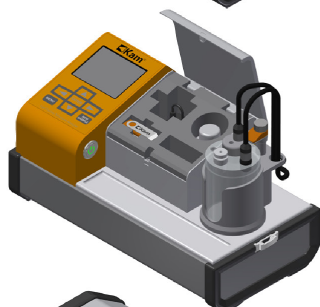
Using coulometric Karl Fischer titration, the KAM® KF analyzes samples sized by volume or weight, determines the water content as low as 1 ppm, and saves the data for up to 100 samples. Results can be printed or downloaded via USB or Windows based software.

KAM® reagents are the highest quality available and come packaged pre-measured for immediate use. Simply open and fill the appropriate cells. The KAM® KF unit automatically notifies you when the reagents have expired.

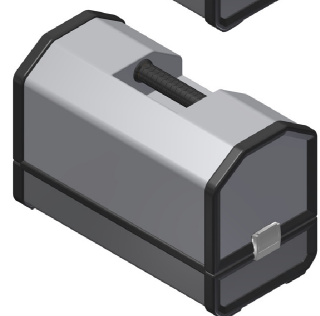
And the KAM® KF is fully portable with a rugged design suitable for the oil field, a rechargeable battery life of 10 hours of continuous use, and storage for all required consumables.



KAM<sup>®</sup> KF  
Karl Fischer  
Moisture Analyzer



Consumables  
storage



Completely portable  
with additional  
storage in lid



Reagents: Generator solution A,  
Generator solution C,  
and Check solution



Homogenizer

## SPECIFICATIONS

<b>Method:</b>	Coulometric Karl Fischer titration
<b>Detection:</b>	Polarization detection
<b>Control:</b>	Automatic electrolysis current control
<b>Display:</b>	320 x 240 LCD
<b>Data storage:</b>	100 samples
<b>Sample size:</b>	0.1, 0.25, 0.5, 1.0 ml or less than 2 grams (or ml)
<b>Range:</b>	10 µg - 100,000 µg H <sub>2</sub> O
<b>Sensitivity:</b>	1 µg H <sub>2</sub> O
<b>Accuracy:</b>	±5 µg for 10 µg - 1000 µg, 0.5% (C.V.) for over 1000 µg (meets or exceeds API MPMS 10.9, ASTM D4928, ISO 12937, and EI 386)
<b>Generator</b>	
<b>Electrode Config.:</b>	With diaphragm
<b>Titration speed:</b>	1000 µg H <sub>2</sub> O/min. (max. at high H <sub>2</sub> O concentrations)
<b>Power requirements:</b>	Operates on either AC or DC. AC - 110/120, 220/240 V, 50/60Hz 12V rechargeable lithium battery
<b>Communication:</b>	USB port, Bluetooth <sup>®</sup> , Windows based software
<b>Dimensions:</b>	Portable 15.5" x 8" x 10" (394mm x 203mm x 254mm) Lab 10.5" x 8" x 9" (267mm x 203mm x 229mm)
<b>Weight:</b>	Approx. 16 lbs. (9 kg)

## FOR MORE INFORMATION ON KAM PRODUCTS

**Phone:** +1 713-784-0000

**Fax:** +1 713-784-0001

**Email:** sales@kam.com

**www.KAM.com**

KAM CONTROLS, INC.  
3939 Ann Arbor Drive  
Houston, TX 77063 USA

KAM CONTROLS IS AN  
ISO 9001:2015 CERTIFIED COMPANY

