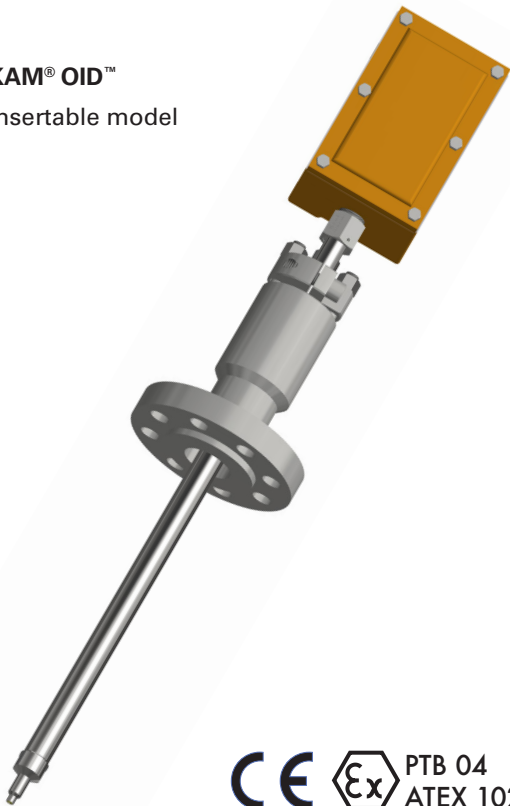


KAM® OID™
Insertable model



The KAM® OID™ Optical Interface Detector has been the preferred sensor for interface detection between refined products since its inception in 2000. Like eyes in the pipe, it provides accurate, **real-time data on product interface even when density does not change between products**, allowing operators to make cuts with confidence and significantly reduce product downgrade and/or transmix.

Fiber optics within the optical probe respond to the absorption, fluorescence, and refractive properties of the fluid, and the combined return signal is then turned into an “optical signature,” recognizing qualitative changes in pipeline fluids.

The OID is designed for minimal maintenance and ongoing ease of use. **Long-lasting LED light sources** ensure long-term, stable performance and minimal power consumption. All electronics are located in an explosion-proof enclosure directly on the end of the probe for a complete and compact unit with maximum installation flexibility.

Measurement is completely automatic and the output signal can be sent to the SCADA, PLC’s, or to a Central Control Room.

KEY FEATURES

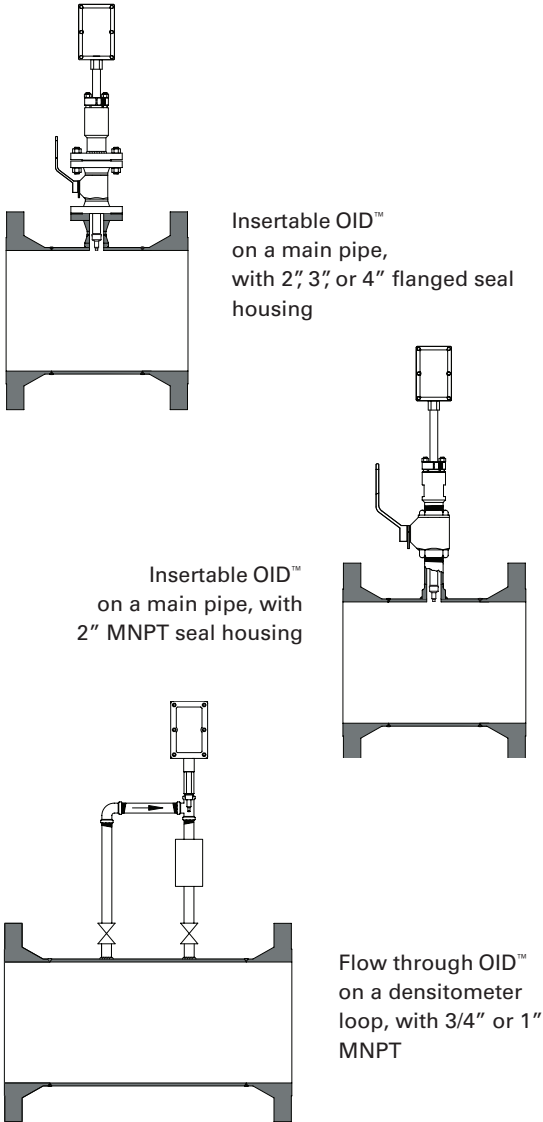
- The optical probe utilizes optimal wavelength for interface detection
- Detects the interface of specialty fuels such as ULSD, LSD, etc.
- LED’s for long-term performance with minimal power and maintenance requirements

Detects interface when densitometers cannot

SIMPLICITY SAVES TIME AND MONEY

- Lenses do not require cleaning
- No moving parts
- Measurement is fully automatic
- Insertable/retractable and flow through models available
- Output signal can be sent to the SCADA, PLC’s, or to a Central Control Room
- Insertable model installs without having to drain the pipe

AVAILABLE MODELS and MOUNTING OPTIONS



APPLICATIONS

- Batching
- Interface detection
- Product transmix management
- Product downgrade management
- Pipeline automation
- Chemicals interface
- Clear oil interface
- Quality control

SPECIFICATIONS

Media:	Refined products
Material:	Wetted parts—316 stainless steel
Power:	12–24 VDC 15 Watts max
Communication:	4–20 mA, RS232, RS485
Fluid temperature:	-40° to 176°F (-40° to 80°C)
Electronics temp.:	-4° to 140°F (-20° to 60°C)
Pressure ratings:	ANSI 150, 300, 600, 900 Threaded models (3/4", 1", 2" MNPT) designed maximum working pressure of 3000 psig
Hazardous area:	PTB04 ATEX 1027 (II 2 G EEx d IIBT6) NEMA4 (IP66 equivalent)
Mounting:	3/4" and 1" MNPT 2" MNPT Seal Housing 2", 3", or 4" Flanged Seal Housing
EX enclosure:	3" x 6" x 3" (76mm x 152mm x 76mm)
Shaft length:	12" to 60"
Pipe size:	3/4" to 48"
Weight:	from 10 lbs. (4.5kg)

FOR MORE INFORMATION ON KAM PRODUCTS
visit WWW.KAM.COM

T: +1 713 784 0000

F: +1 713 784 0001

E: sales@kam.com

KAM CONTROLS, INC.

3939 Ann Arbor Drive

Houston, TX 77063 USA

KAM CONTROLS reserves the right to make changes to this document without notice. OIDLIT0815