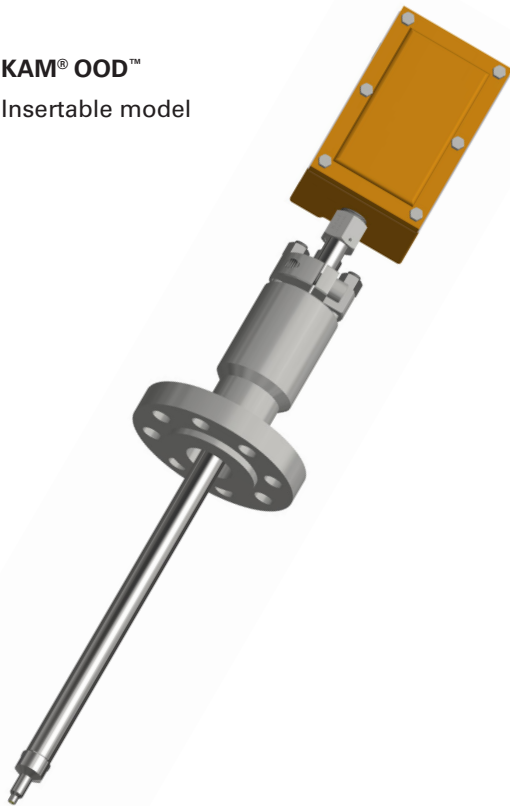


KAM[®] OODTM
Insertable model



The ideal solution for oil-in-water detection, the KAM[®] OODTM Optical Oil Detector offers unmatched simplicity and pin-point accuracy in an in-line meter. The OODTM allows operators to monitor produced water and wastewater streams for the presence of hydrocarbons in a variety of applications, providing continuous, real-time data with a minimum range of 0-100 ppm, maximum 0-5000 ppm. Fiber optics within the optical probe respond to the fluorescence and absorption in the fluid to detect the presence and quantity of hydrocarbons in water. The combined data is translated as voltage on a 4-20 mA output or via MODBUS.

The simplicity of design and quality of engineering employed in the KAM[®] OODTM mean there are no moving parts. Using long-lasting LED light sources ensures long-term, stable performance with limited maintenance and power requirements. In addition, locating the electronics within an explosion-proof enclosure directly on the atmospheric end of the optical probe creates a complete and compact unit with maximum installation flexibility.

Measurement is completely automatic without the need for operator intervention or supervision, and the output signal can be sent to the SCADA, PLC's, or to a Central Control Room for logging or display on chart recorders or monitors.

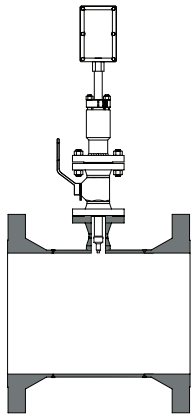
KEY FEATURES

- Optic design minimizes effects of temperature/density/salinity**
- LED's for long-term performance with minimal power and maintenance requirements**
- No moving parts for limited maintenance**
- Insertable type for routinely cleaning lens without having to shut down**
- Can be installed on a main pipeline**
- Output can be sent to SCADA, PLC, etc.**

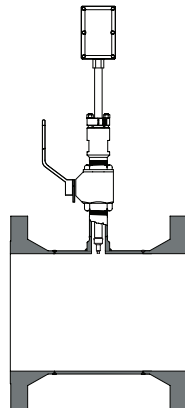
APPLICATIONS

- Wastewater**
- Leak detection**
- Bilge water**
- Storm water**
- Produced water**
- 3-phase separator**

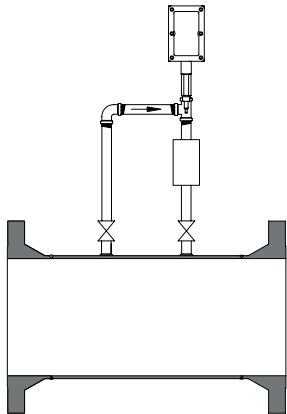
AVAILABLE MODELS and MOUNTING OPTIONS



Insertable OOD™ on a main pipe, with 2", 3", or 4" flanged seal housing



Insertable OOD™ on a main pipe, with 2" MNPT seal housing



Flow through OOD™ on a densitometer loop, with 3/4" or 1" MNPT

SPECIFICATIONS

Minimum Range:	0-100 ppm*
Maximum Range:	0-5000 ppm*
Accuracy:	± 1% of full range*
Minimum resolution:	5 ppm
Material:	Wetted parts-316 stainless steel
Power:	12-24 VDC 15 Watts max
Output/comm:	4-20 mA/RS485 MODBUS/HART
Fluid temperature:	-40° to 200°F (-40° to 95°C)
Electronics temp.:	-4° to 140°F (-20° to 60°C)
Pressure ratings:	ANSI 150, 300, 600, 900
	Threaded models (3/4", 1" MNPT designed to a maximum working pressure of 3000 psig
Mounting:	2" MNPT Seal Housing
	2", 3", or 4" Flanged Seal Housing
	3/4", 1" MNPT for analyzer loops
EX enclosure:	4.6" x 7.1" x 5.4"
	(117 mm x 180 mm x 137 mm)
Protection:	NEMA 4X
Shaft length:	12" to 60"
Pipe size:	3/4" to 48"
Weight:	from 13 lbs. (5.9 kg)

* Range and Accuracy are hydrocarbon dependent- consult factory for details regarding your application

FOR MORE INFORMATION ON KAM PRODUCTS
visit WWW.KAM.COM

T: +1 713 784 0000

F: +1 713 784 0001

E: sales@kam.com

KAM CONTROLS, INC.

3939 Ann Arbor Drive

Houston, TX 77063 USA

KAM CONTROLS reserves the right to make changes to this document without notice. OIDLIT0815